
GIRO SPORT DESIGN



MR-1 AND MR-2 BUCKLE REMOVAL INSTRUCTIONS



MR-1

FACTOR ACCTM

FACTOR ACC HVTM

STEP 1

DEPRESS RELEASE LEVER TO REMOVE STRAP COMPLETELY OUT OF BUCKLE



STEP 2

LOCATE SCREW ON BASE PLATE SHIELD

NOTE.
SCREW IS PLACED ON BASE PLATE SHIELD
NOT ON BASE PLATE



STEP 3

REMOVE SCREW WITH A STANDARD PHILLIPS SCREW DRIVER



STEP 4

PUSH BUCKLE SLIGHTLY TOWARDS SOLE TO ALLOW IT TO BE RELEASED



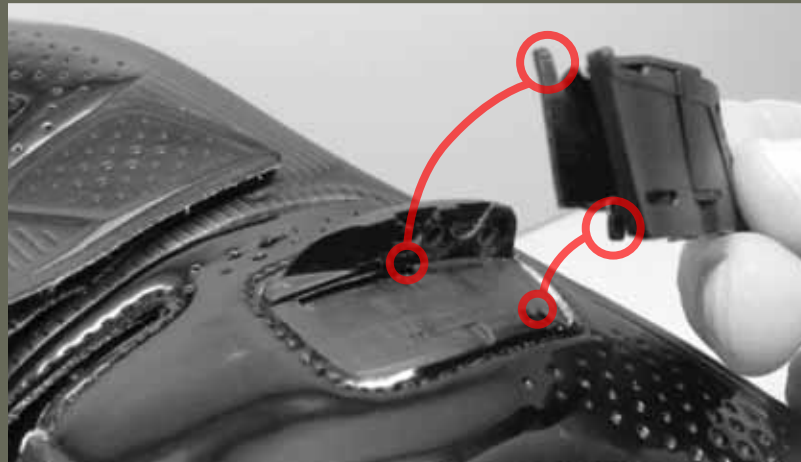
STEP 5

LIFT OLD BUCKLE OUT OF BASE PLATE



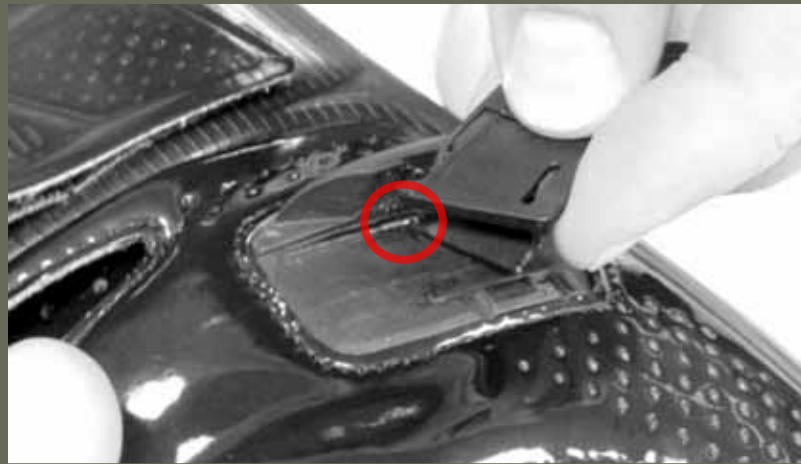
STEP 6

LOCATE PLACEMENT TABS ON BOTTOM OF NEW BUCKLE



STEP 7

PLACE LONGER TAB IN THE RECEIVER ON SHIELDED SIDE



STEP 8

PLACE SHORTER TAB IN SECOND RECEIVER ON OPPOSITE SIDE OF SHIELD



STEP 9

PRESS NEW BUCKLE DOWN TO ENSURE TAB GOES INTO RECEIVER



STEP 10

PUSH NEW BUCKLE SLIGHTLY TOWARDS TOP OF SHOE TO ENSURE TABS ARE IN PLACE.



STEP 11

MAKE SURE HOLE ON BUCKLE LINES UP WITH SCREW RECEIVER ON BASE PLATE SHIELD

**NOTE.
BUCKLE SHOULD BE SET AT LOWER POSITION FOR NORMAL INSTEP**



STEP 12

PLACE AND TIGHTEN SCREW WITH A STANDARD PHILLIPS SCREWDRIVER
NOTE.
ONCE BUCKLE HAS BEEN PLACED, CYCLE THROUGH EVERY POSITION IN THE STRAP TO ENSURE THAT BUCKLE HAS BEEN SET PROPERLY





MR-2

TERRADUROTM

TERRADURATM

TERRITORYTM

REVIELLETM

STEP 1

DEPRESS RELEASE LEVER TO REMOVE STRAP COMPLETELY OUT OF BUCKLE



STEP 6

LOCATE SCREW ON FACE OF BUCKLE UNDER LEVER ARM



STEP 3

REMOVE SCREW



STEP 4

REMOVE OLD BUCKLE FROM BASE PLATE



STEP 5

PLACE NEW BUCKLE ON BASE PLATE

**NOTE.
BUCKLE SHOULD BE SET AT LOWER POSITION
FOR NORMAL INSTEP**



STEP 6

**TIGHTEN SCREW TO SECURE NEW BUCKLE TO
BASE PLATE**

**NOTE.
ONCE BUCKLE HAS BEEN PLACED, CYCLE
THROUGH EVERY POSITION IN THE STRAP TO
ENSURE THAT BUCKLE HAS BEEN SET
PROPERLY**



**NOTE.
MR-2 BUCKLE IS COMPATIBLE WITH ALL GIRO MODELS**

