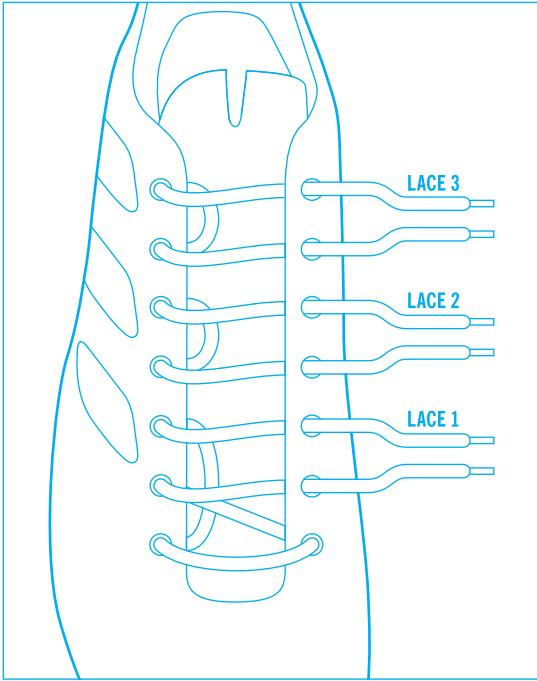


# LACING GUIDE



## PROLIGHT TECHLACE

| SHOE    | LACE 1 | LACE 2 | LACE 3 |
|---------|--------|--------|--------|
| 39-41.5 | 325mm  | 250mm  | 305mm  |
| 42-43.5 | 330mm  | 255mm  | 300mm  |
| 44-45.5 | 330mm  | 255mm  | 310mm  |
| 46-48   | 370mm  | 270mm  | 315mm  |

## FACTOR/SENTRIE/CODE TECHLACE

| SHOE  | LACE 1 | SHOE  | LACE 2 |
|-------|--------|-------|--------|
| 39-41 | 315mm  | 39-43 | 245mm  |
| 42-45 | 325mm  | 44-47 | 250mm  |
| 46-47 | 345mm  | 48-50 | 260mm  |
| 48-50 | 365mm  |       |        |

## FACTRESS/SICA TECHLACE

| SHOE  | LACE 1 | LACE 2 |
|-------|--------|--------|
| 36-38 | 285mm  | 215mm  |
| 39-40 | 295mm  | 225mm  |
| 41-43 | 305mm  | 235mm  |

## RAES TECHLACE

| SHOE  | LACE 1 | LACE 2 |
|-------|--------|--------|
| 36-38 | 295mm  | 225mm  |
| 39-43 | 305mm  | 235mm  |

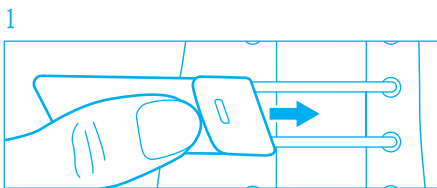
## LACE SIZE RANGE

|       |
|-------|
| 215mm |
| 225mm |
| 235mm |
| 245mm |
| 250mm |
| 255mm |
| 260mm |
| 270mm |
| 285mm |
| 295mm |
| 300mm |
| 305mm |
| 310mm |
| 315mm |
| 325mm |
| 330mm |
| 345mm |
| 355mm |
| 365mm |
| 370mm |

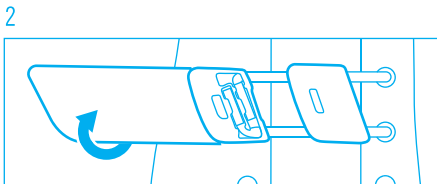
\* 10mm Lace Length +/- = 5mm Strap Length +/-

G5001754

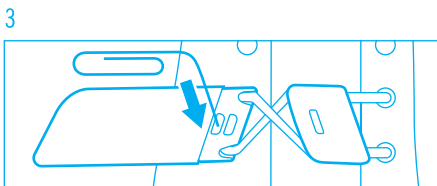
## TO REMOVE TECHLACE



FRONT

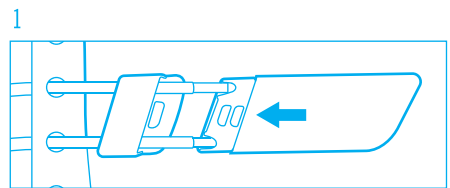


FRONT

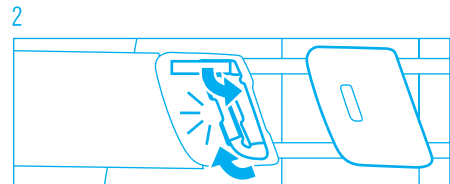


BACK

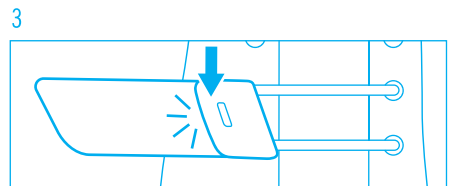
## TO ATTACH TECHLACE



BACK



FRONT



FRONT